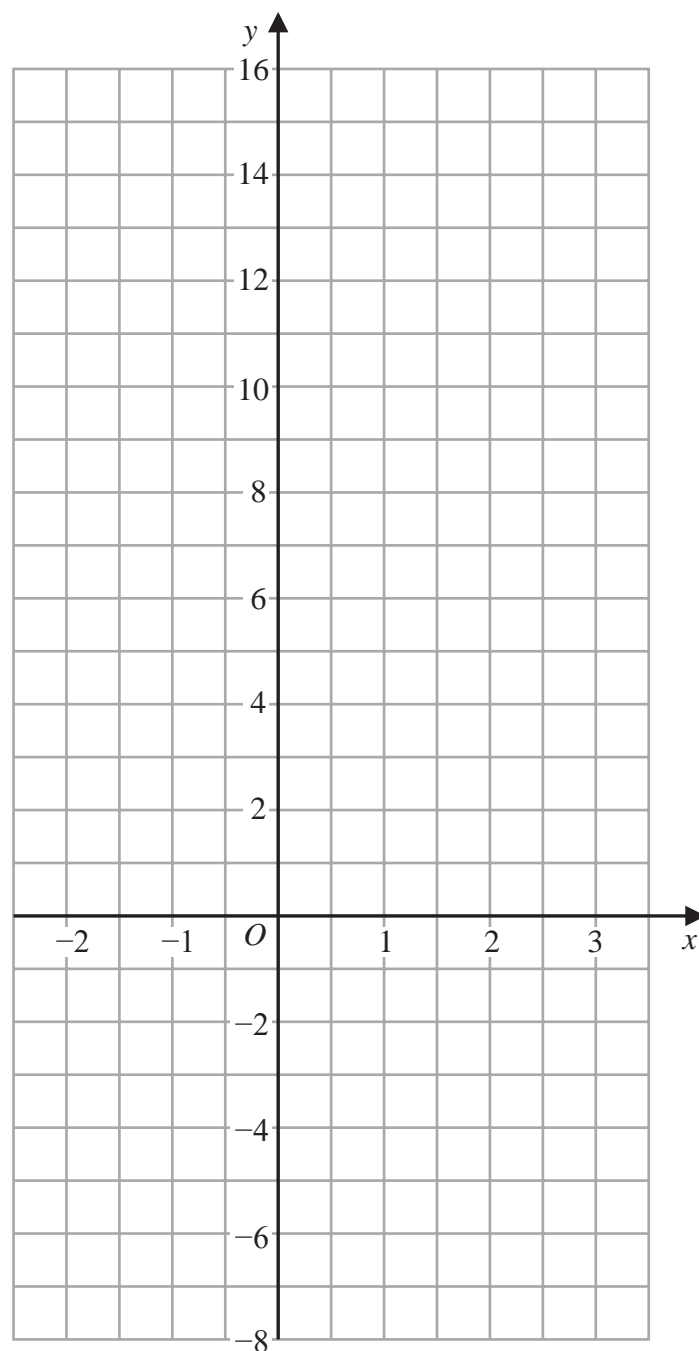


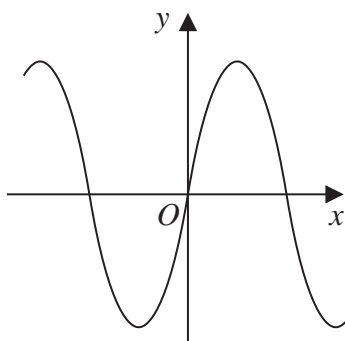
- 1 On the grid, draw the graph of $y = 7 - 4x$ for values of x from -2 to 3



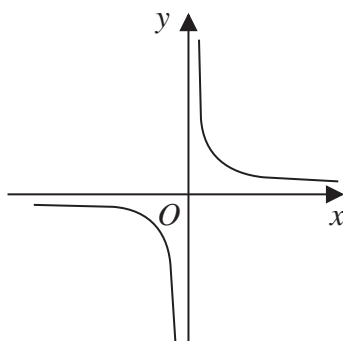
(Total for Question 1 is 3 marks)

2 Here are nine graphs.

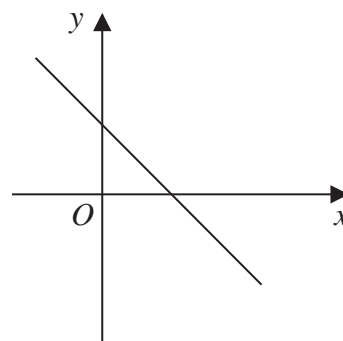
Graph A



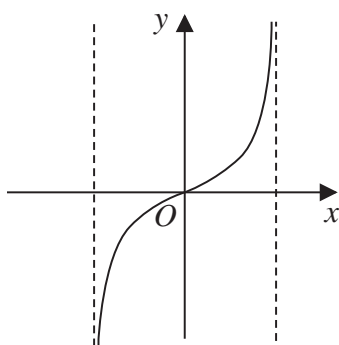
Graph B



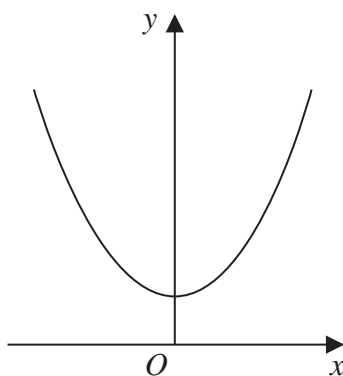
Graph C



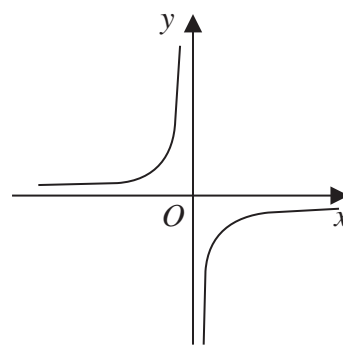
Graph D



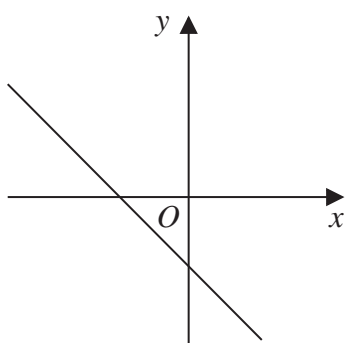
Graph E



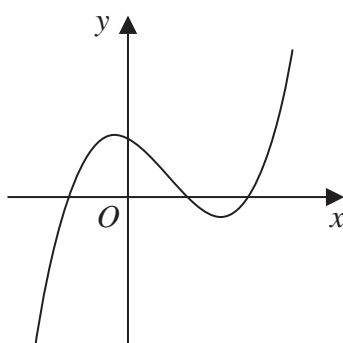
Graph F



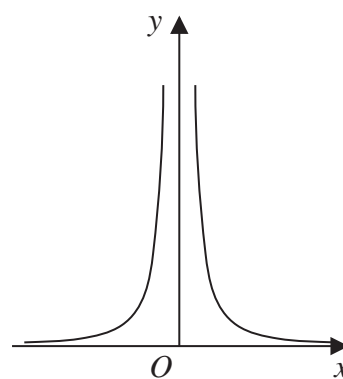
Graph G



Graph H



Graph I

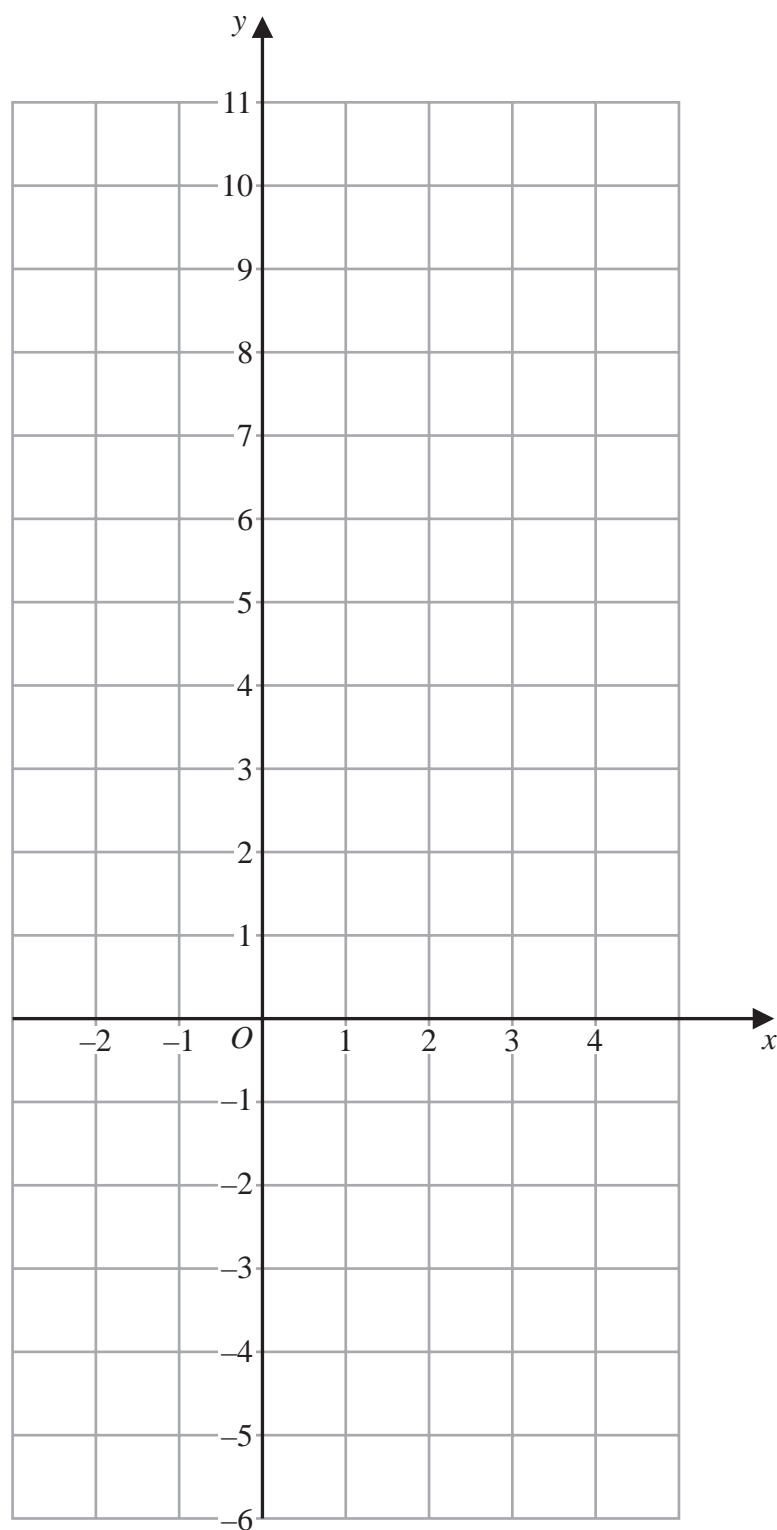


Complete the table below with the letter of the graph that could represent each given equation.
Write each answer on the dotted line.

Equation	Graph
$y = -2x + 3$
$y = -\frac{1}{x}$
$y = \tan x^\circ$
$y = (x + 1)(x - 1)(x - 2)$

(Total for Question 2 is 3 marks)

- 3 On the grid, draw the graph of $5x + 2y = 10$ for values of x from -2 to 4



(Total for Question 3 is 3 marks)